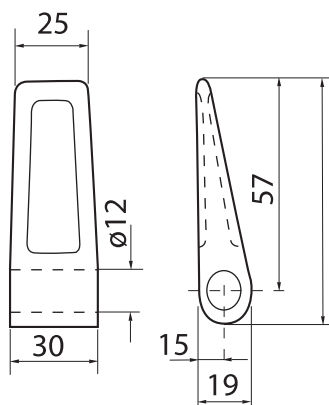
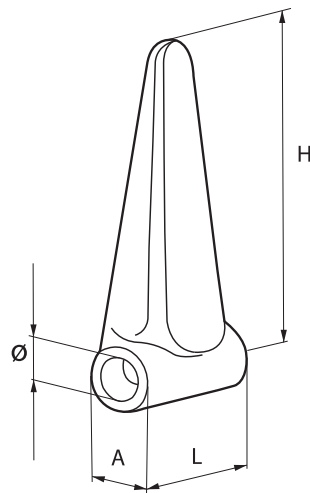


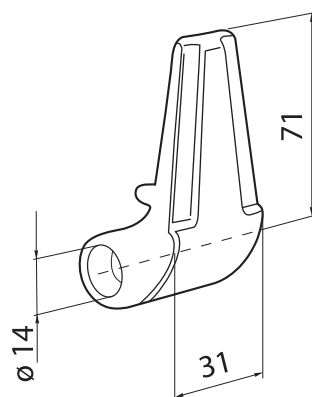
**componenti per l'allestimento di cassoni
con sponde in ferro**

cerniere e perni per sponde in acciaio	pag. 9
cerniere per sponde a doppia apertura	pag. 12
chiusure per sponde in ferro	pag. 17
chiusure per sponde in ferro a doppia apertura	pag. 19
cerniere a libro	pag. 21
saltarelli e riscontri	pag. 22
molle per saltarelli	pag. 24
montanti per sponde in ferro	pag. 25
innesti per montanti	pag. 27
sfere per ribaltabili	pag. 28
cilindri oleodinamici	pag. 30
centralina elettrica	pag. 31
sponde in ferro	pag. 32

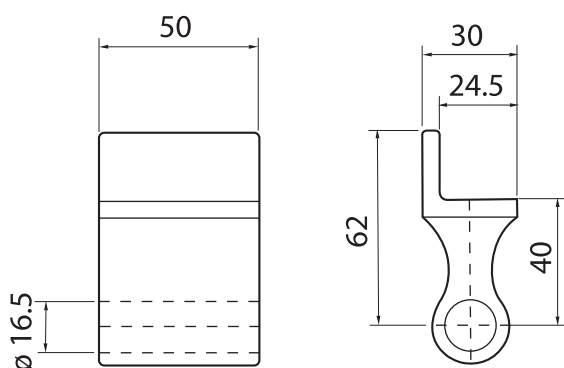
	L	H	A	Ø
Art. 10.0010 Cerniera bombata leggera Kg. 0,12	30	96	21	12
Art. 10.0012 Cerniera bombata media Kg. 0,20	34	110	25	14
Art. 10.0014 Cerniera bombata pesante Kg. 0,30	40	124	29	16



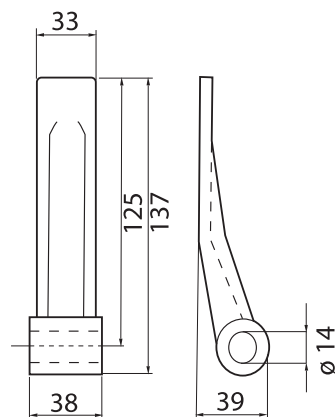
Art. 10.0048
Cerniera Mignon Kg. 0,12



Art. 10.0050
Cerniera a sgabello piccola Kg. 0,30

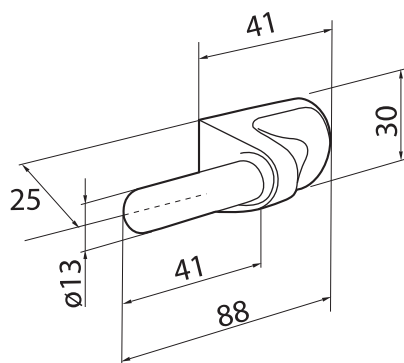
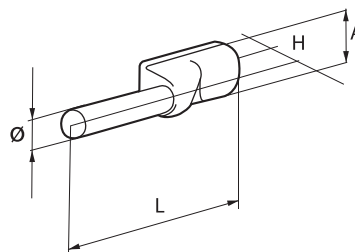


Art. 10.0046
Cerniera bilaterale a sedia Kg. 0,4



Art. 10.0042
Cerniera piatta Kg. 0,35

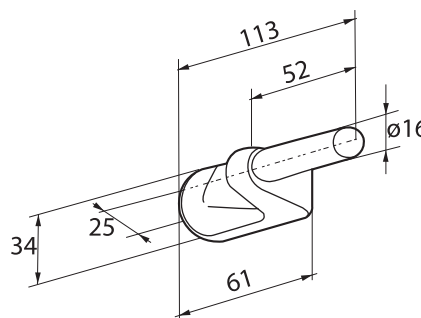
		L	H	A	Ø
Art. 15.0010		94	12	26	11
Perno	Kg. 0,08				
Art. 15.0012		97	15	28	13
Perno	Kg. 0,12				
Art. 15.0014		113	16	30	15
Perno	Kg. 0,20				
Art. 15.0015		117	16	30	16
Perno	Kg. 0,30				



Art. 15.0013

Perno alto

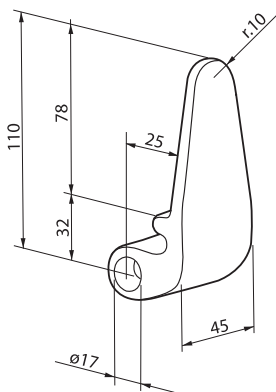
Kg. 0,15



Art. 15.0016

Perno alto

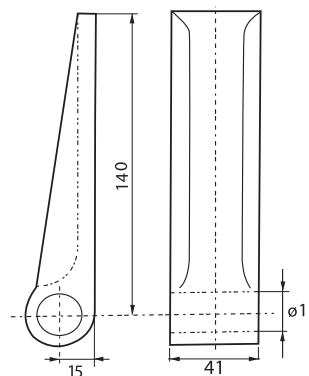
Kg. 0,24



Art. 10.0052

Cerniera a sgabello

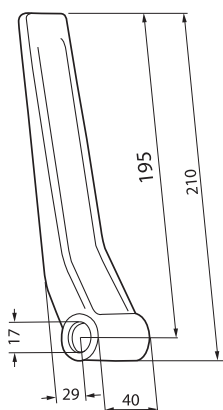
Kg. 0,43



Art. 10.0020

Cerniera piatta pesante

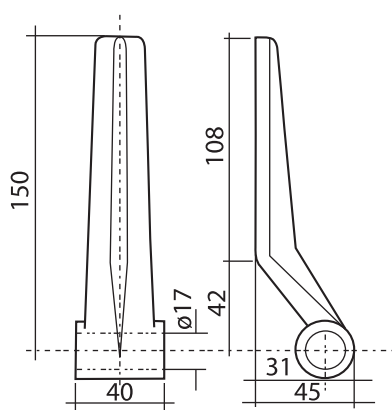
Kg. 0,48



Art. 10.0030

Cerniera tipo Viberti

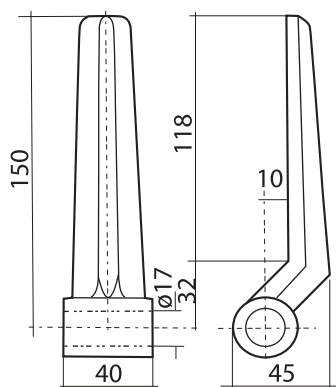
Kg. 0,61



Art. 10.0036

Cerniera tipo Lazio

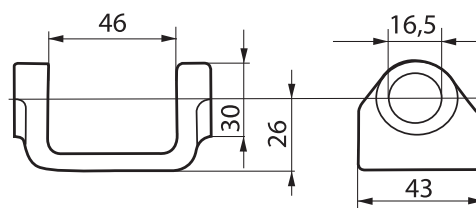
Kg. 0,46



Art. 10.0038

Cerniera tipo Salerno

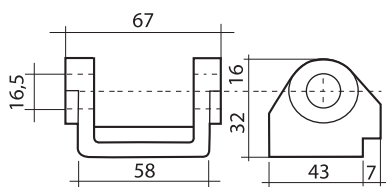
Kg. 0,50



Art. 10.0032

Supporto cerniera basso

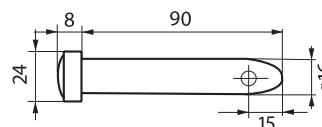
Kg. 0,26



Art. 10.0034

Supporto cerniera alto

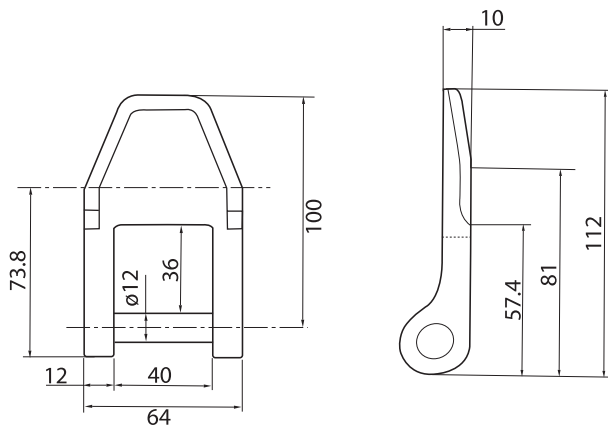
Kg. 0,30



Art. 15.0026

Perno a spina

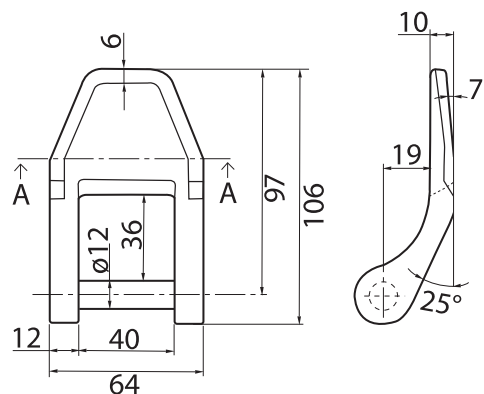
Kg. 0,15



Art. 10.2080

Cerniera sponda

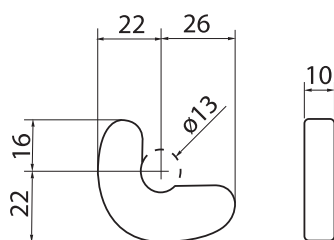
Kg. 0,38



Art. 10.2080.1

Cerniera sponda piegata

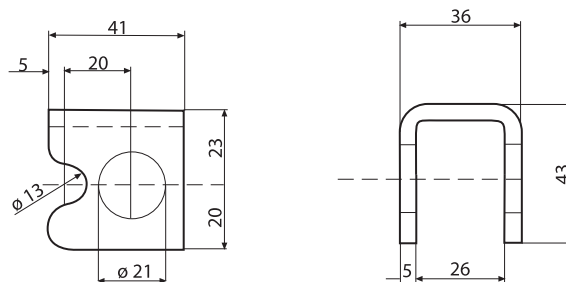
Kg. 0,38



Art. 10.2084

Paletta

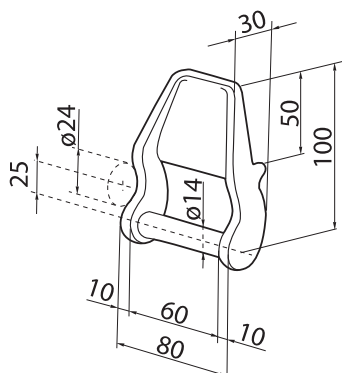
Kg. 0,06



Art. 10.2082

Supporto

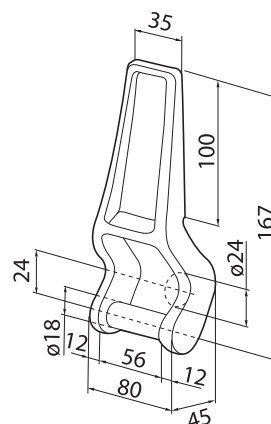
Kg. 0,16



Art. 10.2046

Cerniera sponda

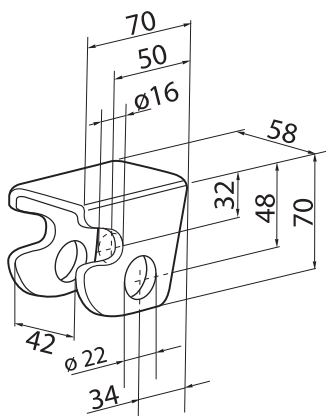
Kg. 0,50



Art. 10.2040

Cerniera sponda

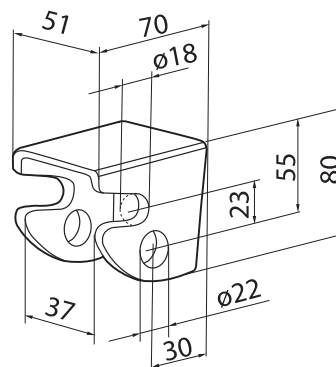
Kg. 0,86



Art. 10.2048

Supporto guida asta

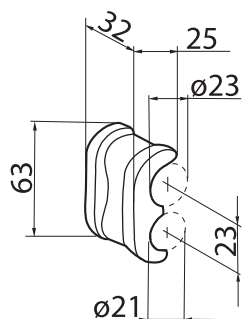
Kg. 0,45



Art. 10.2042

Supporto guida asta

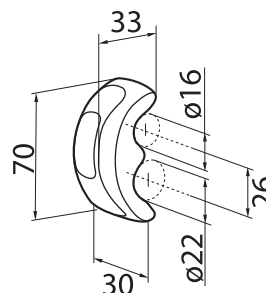
Kg. 0,48



Art. 10.2064

Paletta

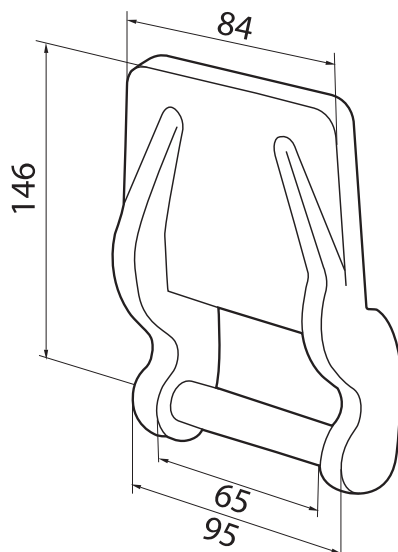
Kg. 0,20



Art. 10.2044

Paletta

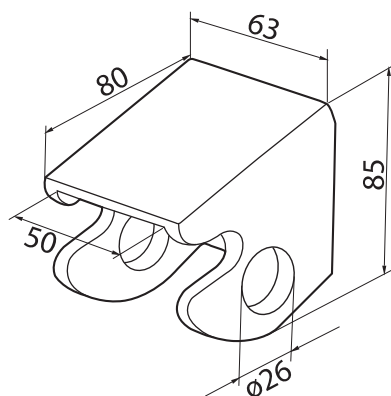
Kg. 0,20



Art. 10.2020

Cerniera sponda

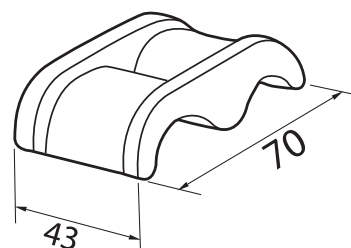
Kg. 0,65



Art. 10.2022

Supporto guida asta

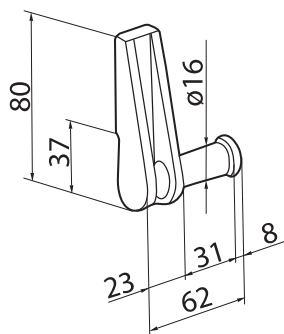
Kg. 0,45



Art. 10.2024

Paletta

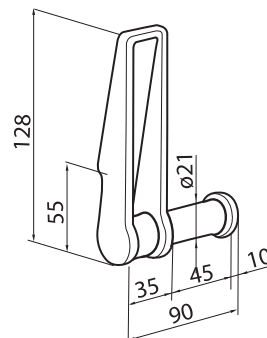
Kg. 0,23



Art. 10.2503

Cerniera posteriore piccola

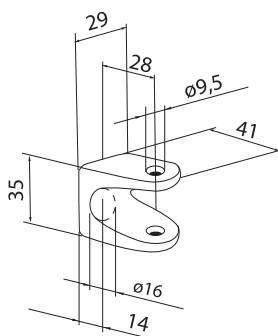
Kg. 0,20



Art. 10.2501

Cerniera posteriore

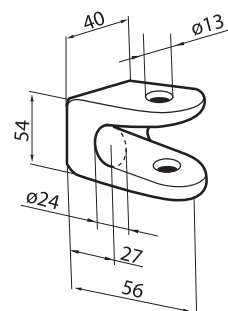
Kg. 0,64



Art. 10.2505

Supporto a forcella

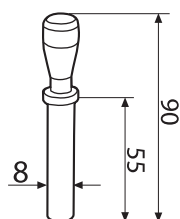
Kg. 0,15



Art. 10.2502

Supporto a forcella

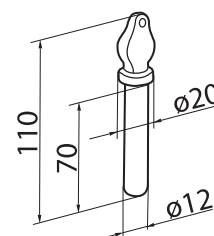
Kg. 0,35



Art. 15.0034

Perno a spina

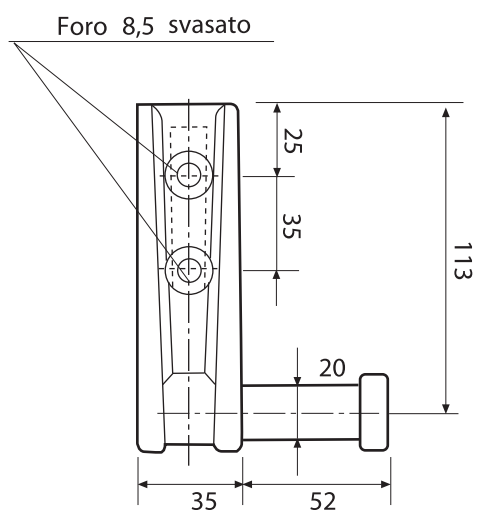
Kg. 0,07



Art. 15.0028

Perno a spina

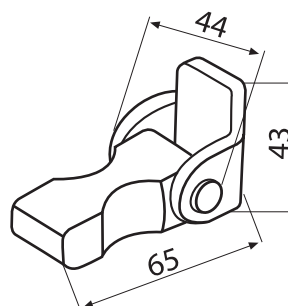
Kg. 0,11



Art. 10.2520

Cerniera posteriore zincata e forata

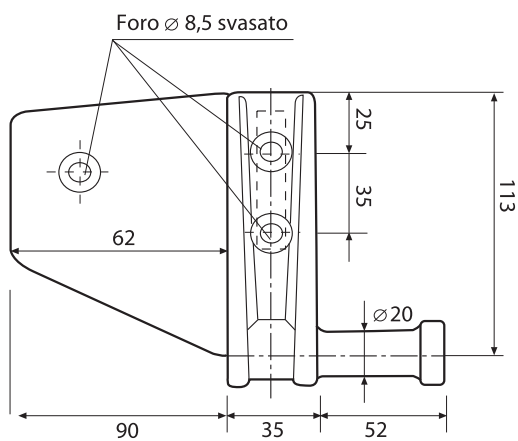
Kg. 0,63



Art. 20.3026

Saltarello fermaleva

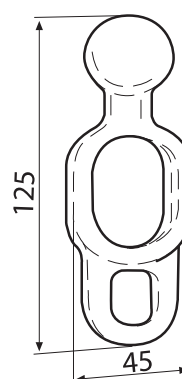
Kg. 0,22



Art. 10.2522

Cerniera posteriore zincata e forata

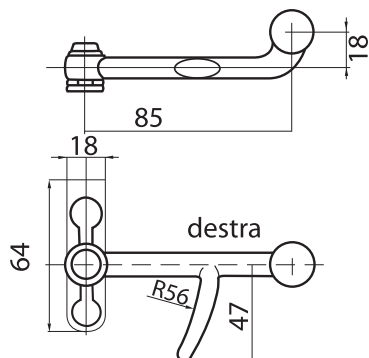
Kg. 0,70



Art. 20.3024

Anello fermaleva

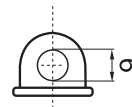
Kg. 0,24



Art. 20.0020

Chiusura a pomolo leggerissima

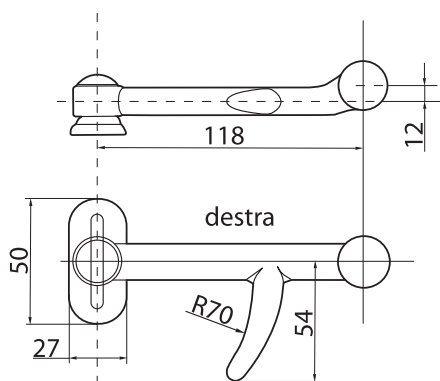
Kg. 0,18



Art. 20.0001

Golfare

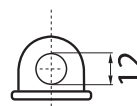
Kg. 0,03



Art. 20.0022

Chiusura a pomolo leggera

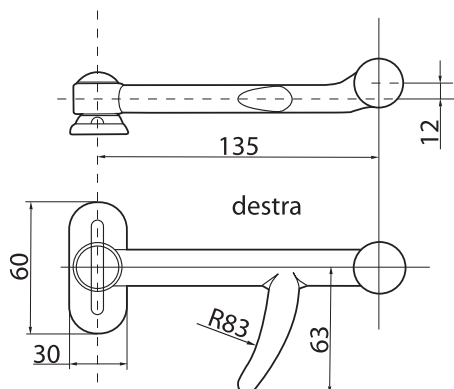
Kg. 0,27



Art. 20.0002

Golfare

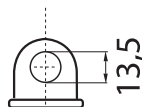
Kg. 0,04



Art. 20.0024

Chiusura a pomolo media

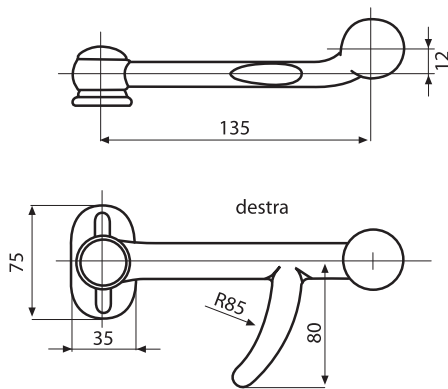
Kg. 0,46



Art. 20.0003

Golfare

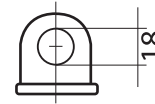
Kg. 0,05



Art. 20.0026

Chiusura a pomolo pesante

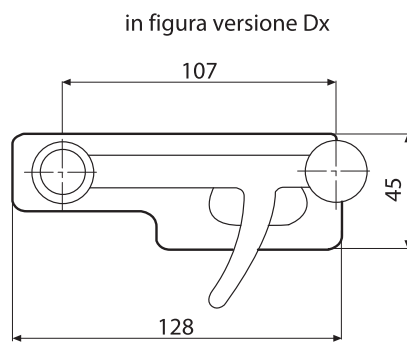
Kg. 0,73



Art. 20.0006

Golfare

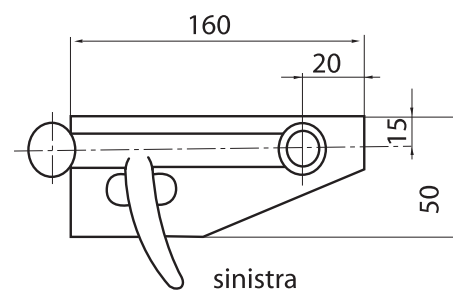
Kg. 0,09



Art. 20.1014

Chiusura leggera con piastra

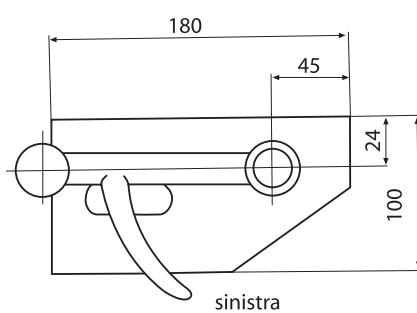
Kg. 0,40



Art. 20.1016

Chiusura media con piastra

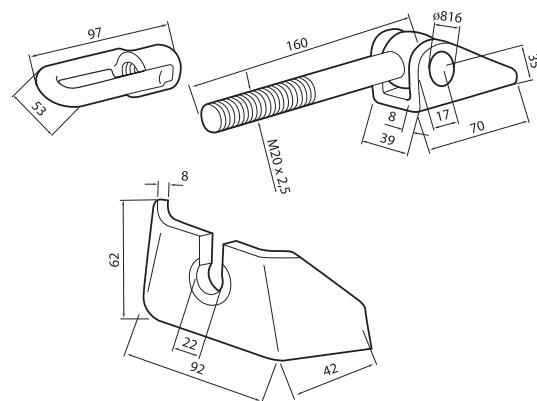
Kg. 0,68



Art. 20.1018

Chiusura pesante con piastra

Kg. 1,10

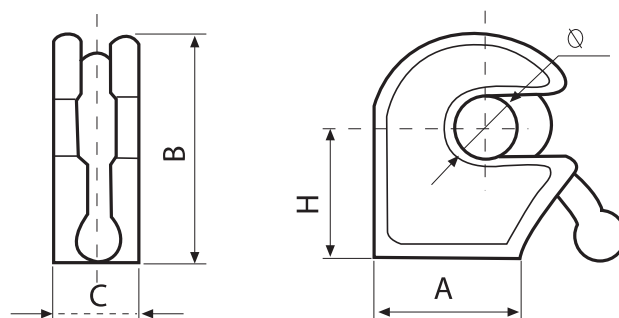


Art. 20.1030

Chiusura carro botte

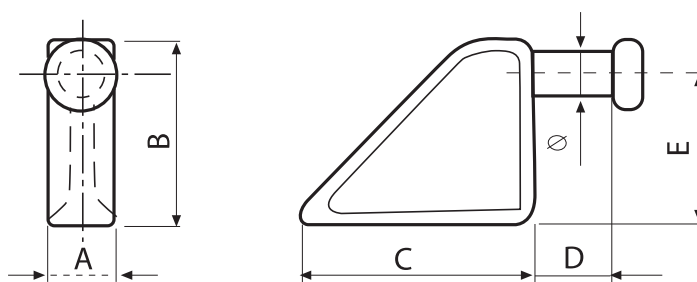
Kg. 1,78

CHIUSURE A BLOCCO

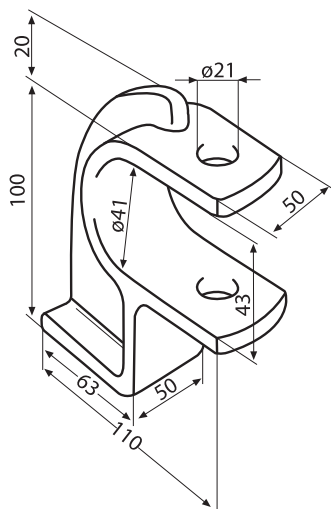


	Ø	A	B	C	H	PESO Kg.
Art. 20.3005	21	54	86	27	50	0,73
Art. 20.3010	21	60	110	36	66	1,40
Art. 20.3011	24	62	114	38	71	1,65
Art. 20.3014	31	78	122	40	70	1,80
Art. 20.3020	42	98	140	44	82	2,74

PIANTONI PER CHIUSURE A BLOCCO



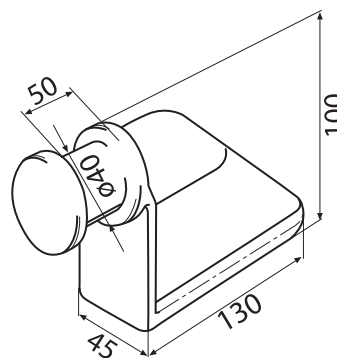
	Ø	A	B	C	D	E	PESO Kg.
Art. 20.3007	19	23	76	92	30	60	0,62
Art. 20.3008	20	27	108	130	40	92	1,12
Art. 20.3013	24	25	110	132	44	95	1,14
Art. 20.3012	29	34	121	128	43	100	1,58
Art. 20.3022	40	32	130	130	48	96	1,95



Art. 20.3018

Supporto per piantone Dumper

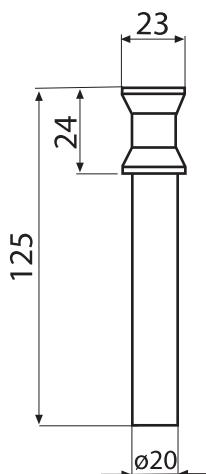
Kg. 2,04



Art. 20.3016

Piantone Dumper

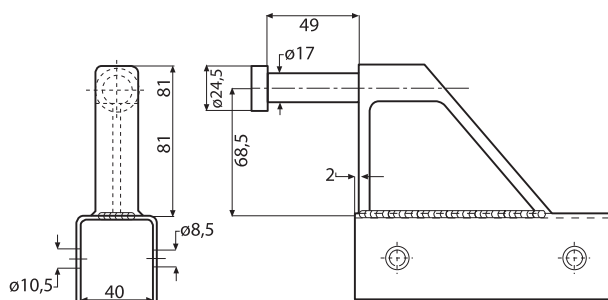
Kg. 2,31



Art. 15.0030

Perno a spina

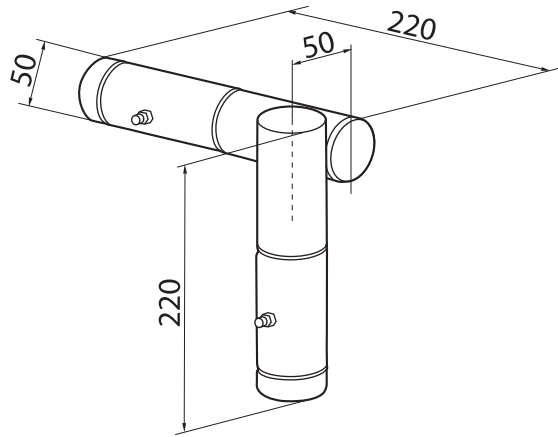
Kg. 0,29



Art. 13.0018

Piantone zincato con supporto per sponde TR5

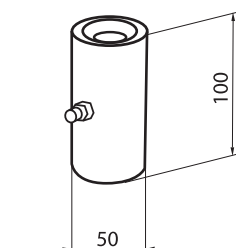
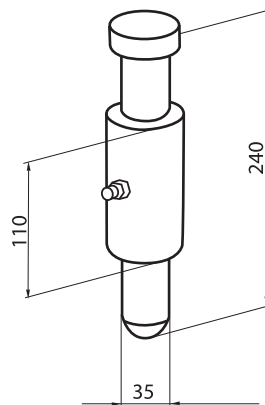
Kg. 1,80



Art. 10.2510

Cerniera sponda superiore apertura a libro

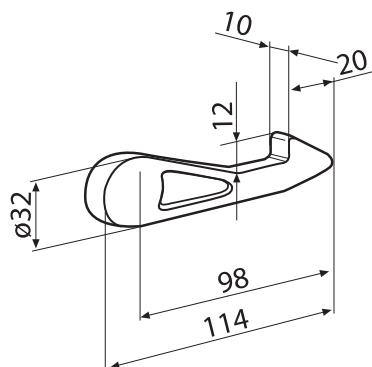
Kg. 7,00



Art. 10.2512

Cerniera sponda inferiore apertura a libro

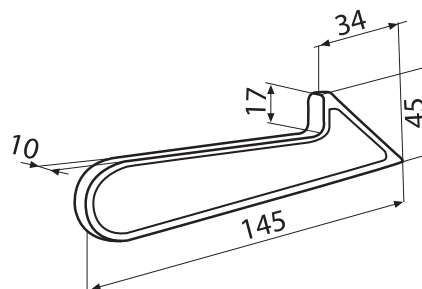
Kg. 3,50



Art. 20.4000

Saltarello piccolo

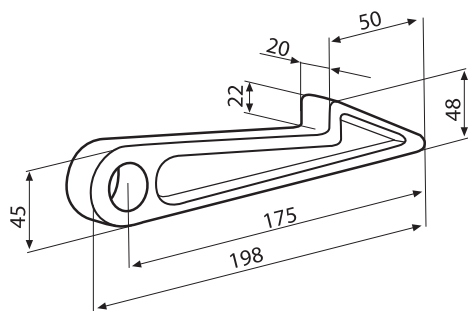
Kg. 0,14



Art. 20.4001

Saltarello

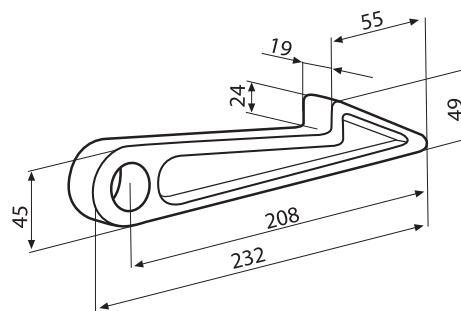
Kg. 0,25



Art. 20.4003

Saltarello

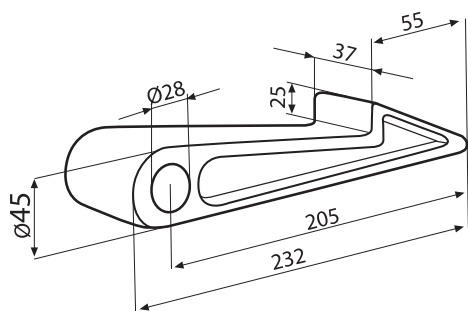
Kg. 0,75



Art. 20.4004

Saltarello

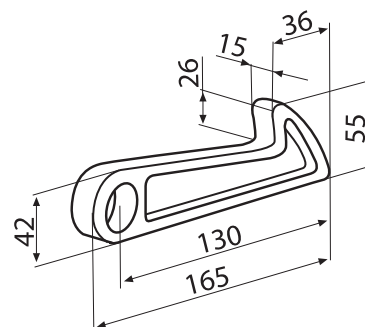
Kg. 0,91



Art. 20.4005

Saltarello

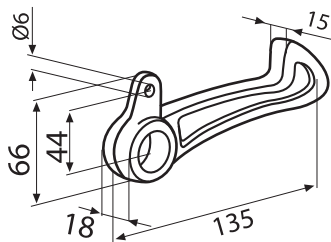
Kg. 1,80



Art. 20.4007

Saltarello

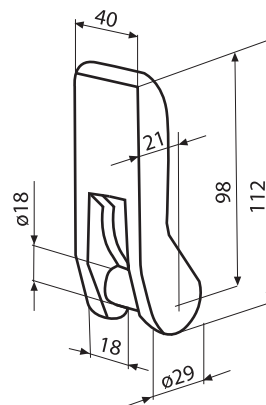
Kg. 0,50



Art. 20.4002

Saltarello tipo Romanazzi

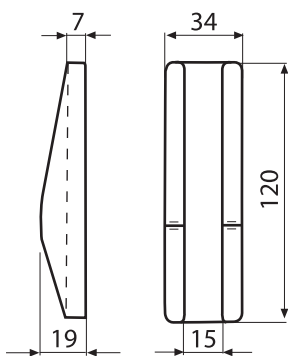
Kg. 0,43



Art. 20.4006

Riscontro saltarello Romanazzi

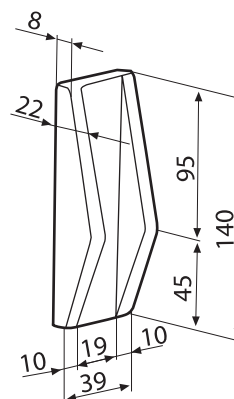
Kg. 0,42



Art. 20.4011

Riscontro piccolo

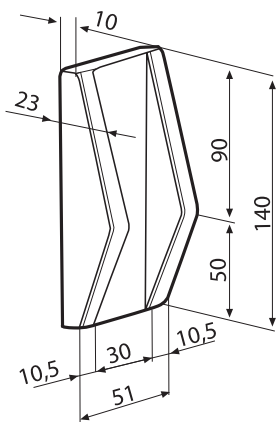
Kg. 0,23



Art. 20.4008

Riscontro medio

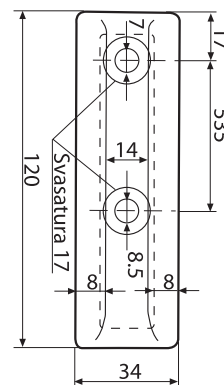
Kg. 0,38



Art. 20.4012

Riscontro pesante

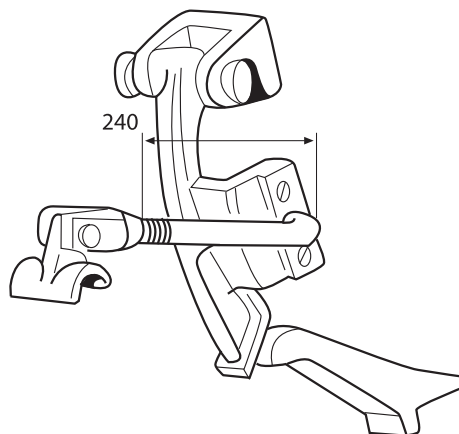
Kg. 0,45



Art. 20.4013

Riscontro zincato e forato

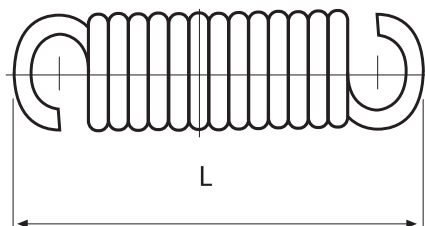
Kg. 0,36



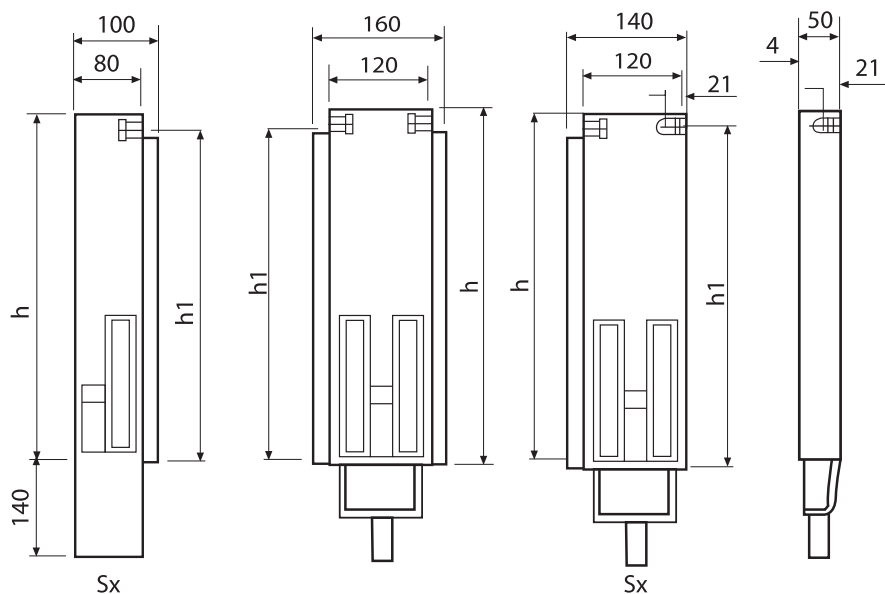
Art. 20.4009

Apertura automatica pesante

Kg. 2,00

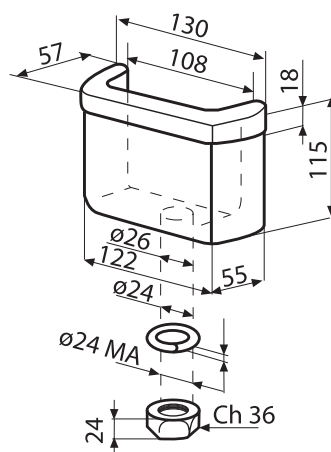


		L	PESO Kg.
Art. 20.4014	Molla per saltarello piccola	120	0,10
Art. 20.4016	Molla per saltarello media	155	0,20
Art. 20.4018	Molla per saltarello grande	180	0,30



H	H1
500	465
600	565
700	665

H mm	Materiale	Anteriore	Kg.	Centrale	Posteriore	Kg.
500	Ferro	13.1100	5,00	13.1101	13.1102	10,00
600	Ferro	13.1103	6,00	13.1104	13.1105	11,50
700	Ferro	13.1106	7,00	13.1107	13.1108	12,50

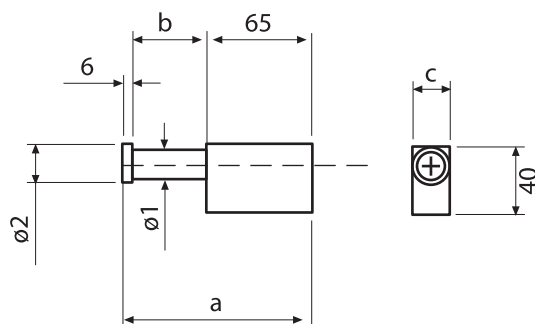


Art. 13.0040

Sede per montante

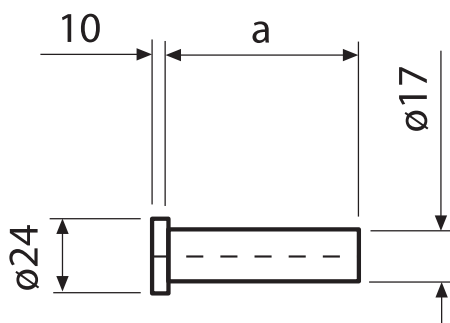
gr. 2900

PERNO PER PIANTONI

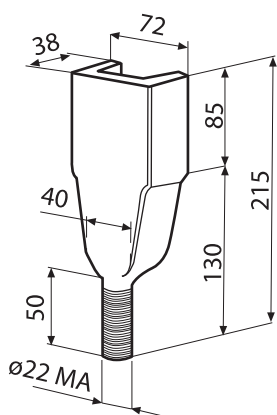


	A	B	C	ø1	ø2	KG.
Art. 13.0017	115	43	25	23	30	0,67

PERNO SEMPLICE PER PIANTONI



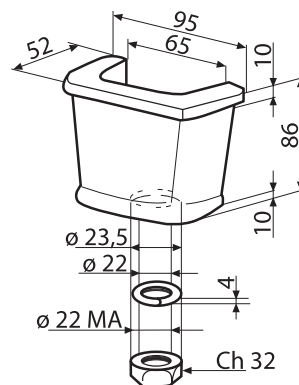
	Acciaio	A	Kg.
Art. 13.0020	Grezzo	70	0,13
Art. 13.0075	Zincato	113	0,21



Art. 71.0010

Innesto a cuneo leggero

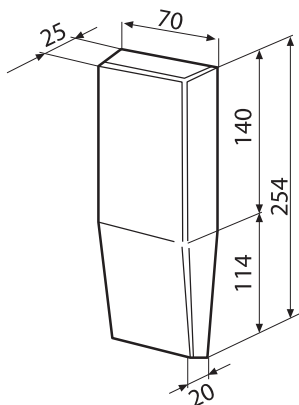
Kg. 1,70



Art. 71.0012

Sede innesto leggero

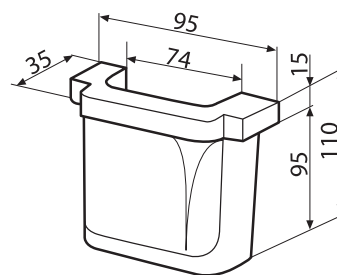
Kg. 1,10



Art. 71.0022

Innesto a cuneo medio

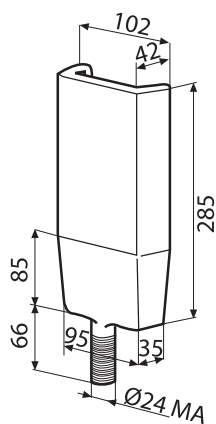
Kg. 1,90



Art. 71.0024

Sede innesto a cuneo medio

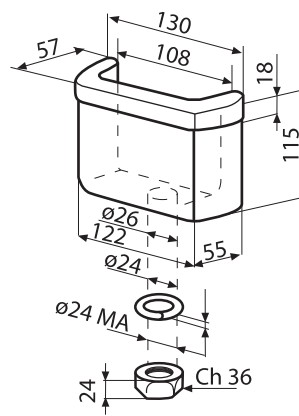
Kg. 1,40



Art. 71.0018

Innesto a cuneo pesante

Kg. 4,50

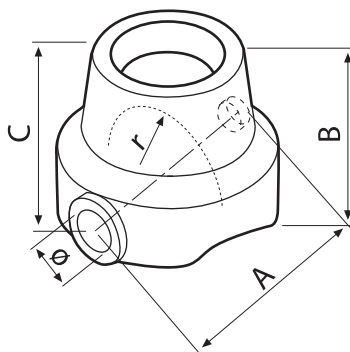


Art. 13.0040

Sede innesto a cuneo pesante

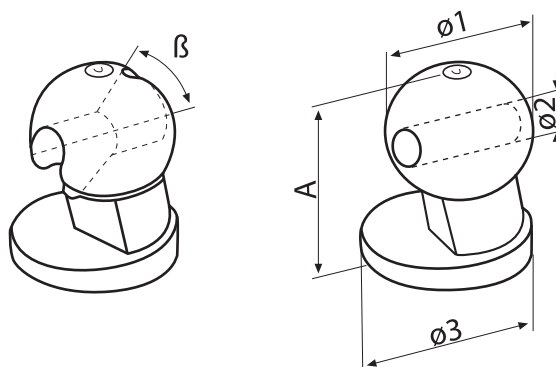
Kg. 2,90

SUPPORTI SFERA



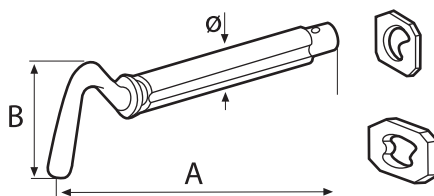
	A	B	Ø	R	Kg.
Art. 31.0010	90	68	19	30,5	1,25
Art. 31.0020	117	92	20	37,5	2,53
Art. 31.0030	132	85	25	42,5	4,36
Art. 31.0040	148	107	26	47,5	5,54
Art. 31.0046	162	136	31	55	10,15

SFERE



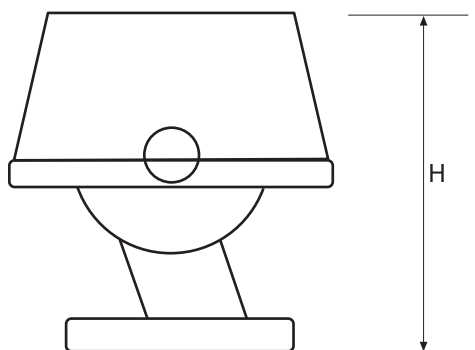
SFERE CON FORO	Kg.	1	2	3	A	B	SFERE CON ASOLA	Kg.
Art. 31.0012	1,20	60	19	60	100	55°	Art. 31.0014	1,15
Art. 31.0022	2,30	75	20	76	110	60°	Art. 31.0024	2,10
Art. 31.0032	3,15	85	25	90	130	60°	Art. 31.0034	2,90
Art. 31.0042	4,70	95	26	110	137	60°	Art. 31.0044	4,50
Art. 31.0048	8,20	110	32	126	167	55°	Art. 31.0050	7,50

SPINOTTI E PIASTRINE

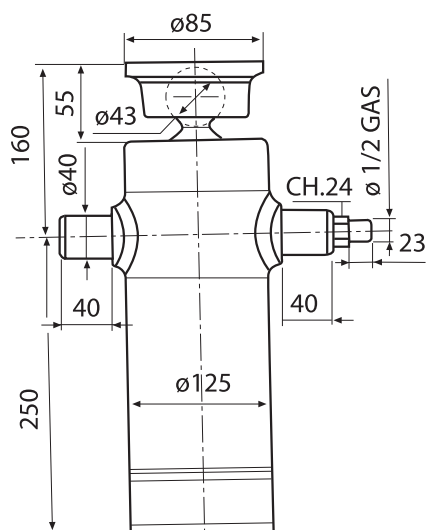


SPINOTTO A 1 GOLA	PIASTRINA A 1 GOLA	Ø	A	B	SPINOTTO A 2 GOLE	PIASTRINA A 2 GOLE	Kg.
Art. 31.0103	Art. 31.0104	18	180	70	Art. 31.0101	Art. 31.0102	0,32
Art. 31.0117	Art. 31.0104	18	211	70	Art. 31.0115	Art. 31.0102	0,38
Art. 31.0105	Art. 31.0112	24	242	75	Art. 31.0107	Art. 31.0114	0,70
Art. 31.0111	Art. 31.0112	24	260	75	Art. 31.0113	Art. 31.0114	0,75
Art. 31.0056	Art. 31.0054	30	272	75	Art. 31.0058	Art. 31.0052	1,38

SERIE COMPLETE



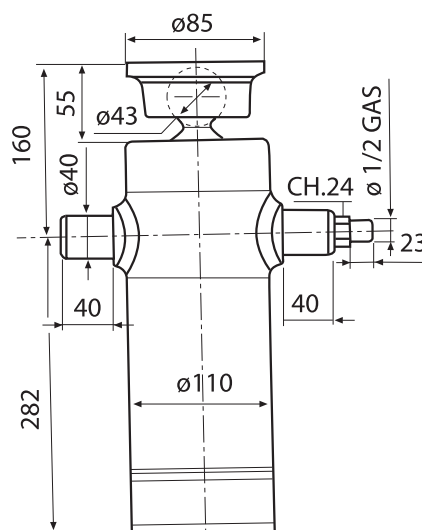
SERIE COMPLETE		H mm
Art. 31.0015	Ø 60	125
Art. 31.0025	Ø 75	150
Art. 31.0035	Ø 85	150
Art. 31.0045	Ø 95	175
Art. 31.0055	Ø 110	220



Art. 33.0014

Cilindro penta 5 sfili corsa 1252

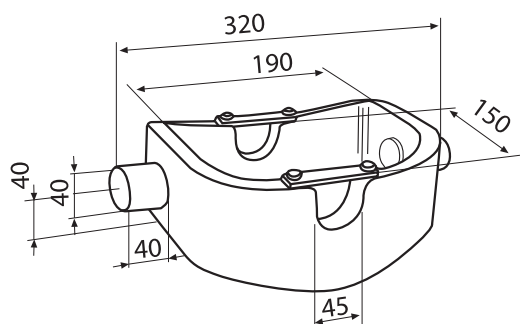
Kg. 29,00



Art. 33.0012

Cilindro penta 4 sfili corsa 1155

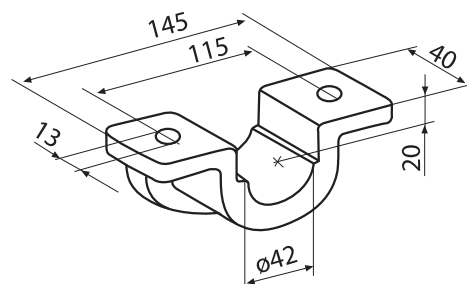
Kg. 26,00



Art. 34.0010

Culla/Bilanciere L06/04

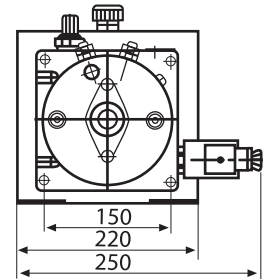
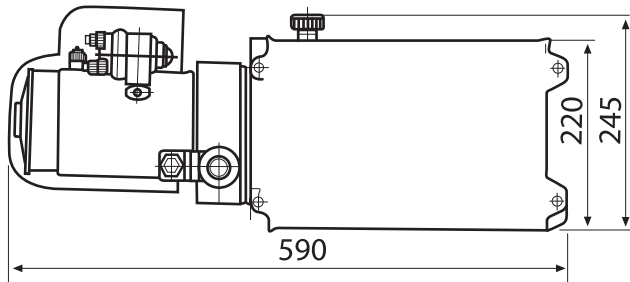
Kg. 8,50



Art. 34.0050

Coppia supporti SB40

Kg. 1,00



Art. 33.0090

Centralina elettrica 12V 12 lt.

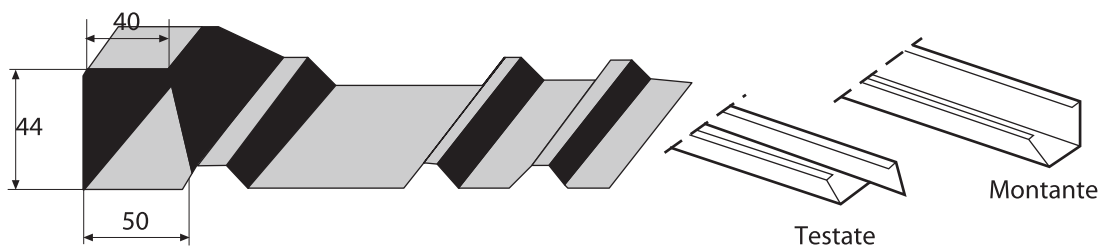
Kg. 18,00

Art. 33.0092

Kit elettrico con pulsantiera fissa

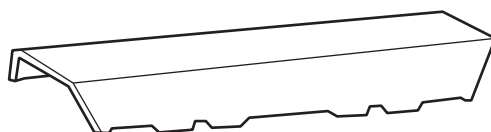
Kg. 1,50

SPONDE IN FERRO SERIE R1/81

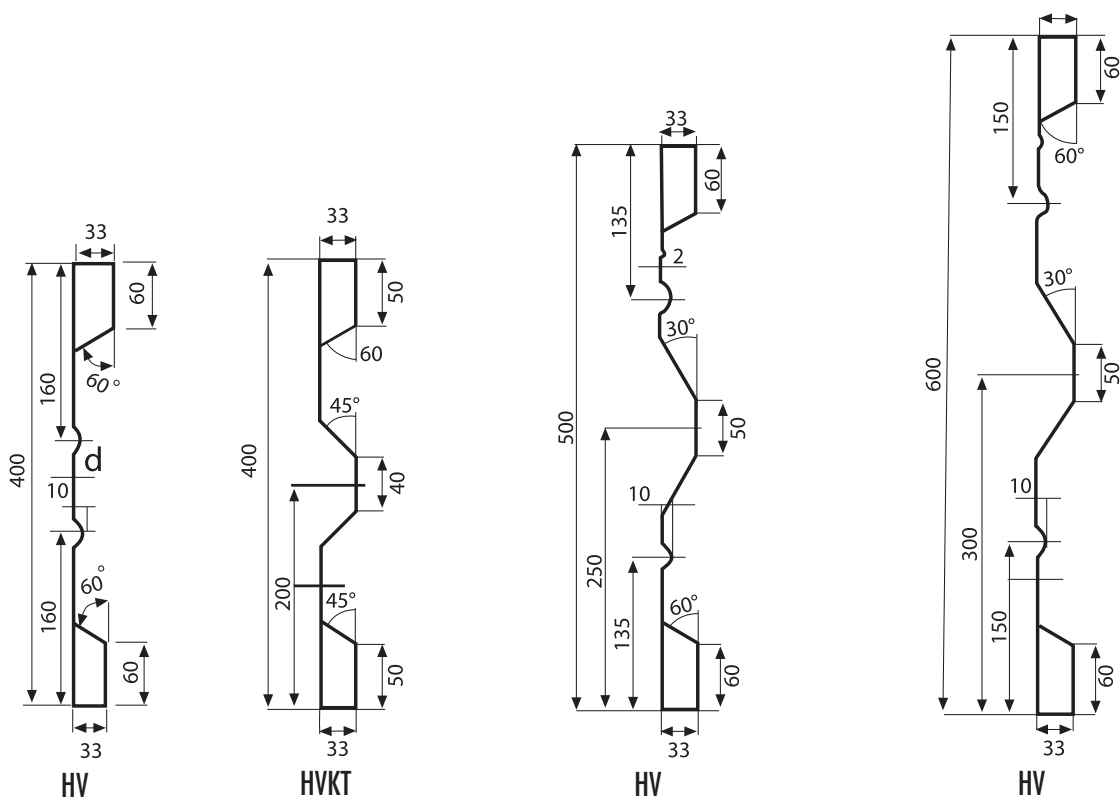


Lunghezza mm	Altezza mm	Spessore lamiera	Peso in Kg. al metro lineare	Articolo
5000 6000	350	15/10	7.70	32.0013 32.0014
5000 6000	400	15/10	8.00	32.0032 32.0033
5000 6000	500	15/10	9.50	32.0052 32.0053
5000 6000	500	25/10	15.00	32.0052.1 32.0053.1
5000 6000	600	25/10	17.50	32.0070 32.0072

TESTATE E MONTANTI RASTREMATI



H	Testate	Kg.	Montanti	Kg.
350	Art. 32.0016	0,8	Art. 32.0018	0,6
400	Art. 32.0036	0,95	Art. 32.0038	0,7
500	Art. 32.0056	1,2	Art. 32.0058	0,9
600	Art. 32.0060	1,8	Art. 32.0062	1,2



	L mm	Descrizione	Peso Kg. mt l
Art. 32.0122	5000	Sponda ferro HV - H 400 15/10	8,5
Art. 32.0123	6000	Sponda ferro HV - H 400 15/10	8,5
Art. 32.0132	5000	Sponda ferro HVKT - H 400 20/10	11
Art. 32.0133	6000	Sponda ferro HVKT - H 400 20/10	11
Art. 32.0152	5000	Sponda ferro HV - H 500 20/10	12
Art. 32.0153	6000	Sponda ferro HV - H 500 20/10	12
Art. 32.0162	5000	Sponda ferro HV - H 600 20/10	13
Art. 32.0163	6000	Sponda ferro HV - H 600 20/10	13

Area for handwritten notes, consisting of multiple horizontal dotted lines.